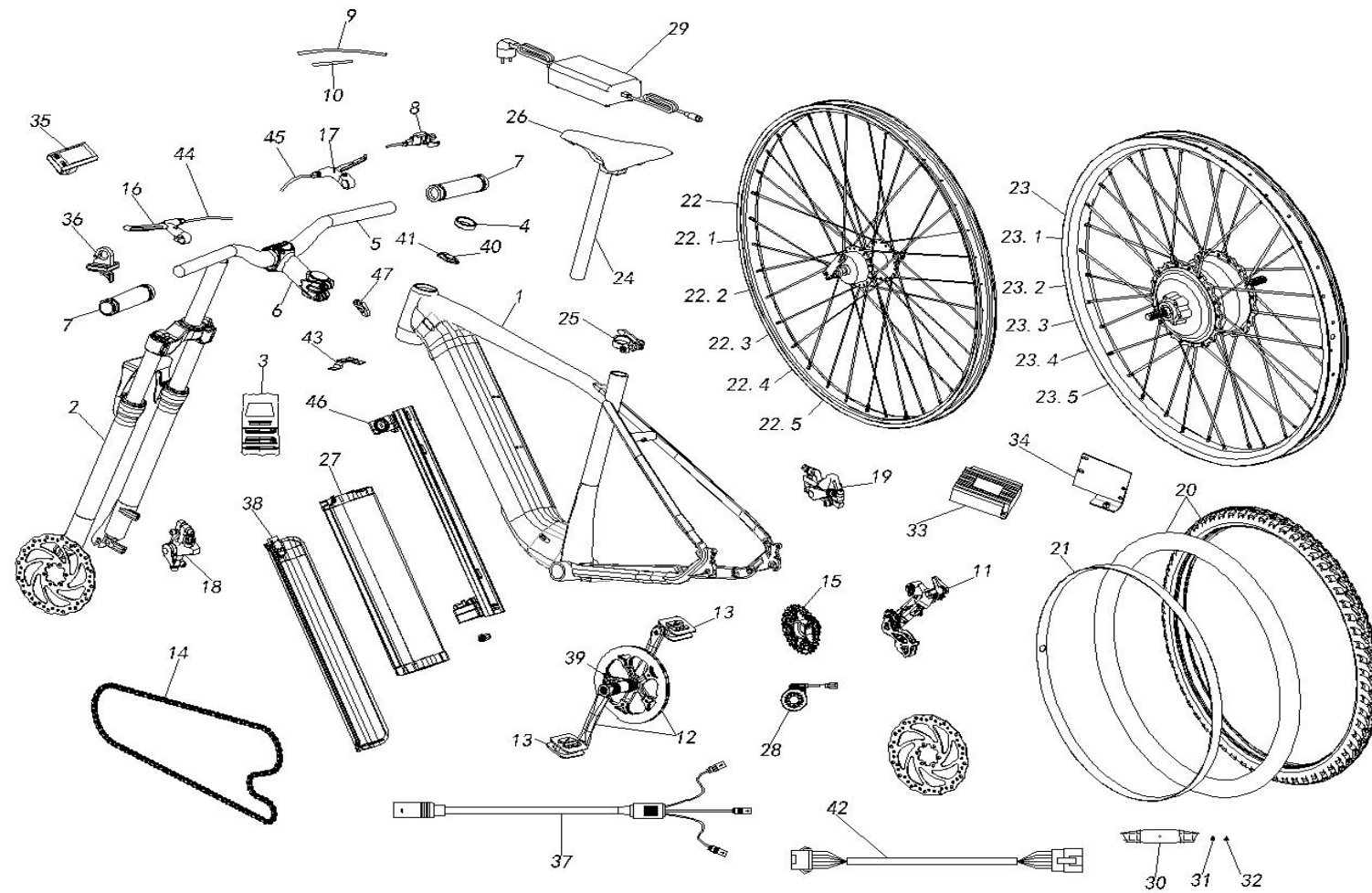


# e-MTB MTS 500H SPARE PARTS MANUAL



**benelli**  
B I C I C L E T T E



item	Part#	Name	size/note	Unit	pc
1	10101000W001	Frame	EBM27540 AL6061	pc	1
2	10207000AV01	Front fork	ZOOM 866S	pc	1
3	102090005302	front shaft assy.	GH-190	set	1
4	102080001201	Bushing	10mm	pc	2
5	102040006101	handle bar	PROMAX HB-3188TP W680	pc	1
6	102050005501	handle bar joint	PROMAX MA-411 AL6061	pc	1
7	102010001501	handle bar cover	HL-G201 φ 130mm/130mm	set	1
8	102060003001	right hand shifting switch	ASLTX30R7AT 2050MM	pc	1
9	102110004501	shifting cable tube 1	1800mm	pc	1
10	102110005501	shifting cable tube 2	350mm	pc	1
11	104050001301	Rear fork	ARDM360SGSL 7/8-SPEED,	pc	1
12	104010000G01	crank sprocket assy.	F104-EX1-GXA104 170X42T	set	1
13	104020001001	pedal	C127	set	1

14	104040006901	chain	Z8.3 1/2*3/32 *120	pc	1
15	104060005001	flywheel	MFTZ5007 MF-TZ500-7	pc	1
16	102020105009	left brake leveler	108PDD+BS106	pc	1
17	102020205009	right brake leveler	108PDD+BS106	pc	1
18	102100005901	front brake assy	ARIES MD-M300&TR180-1	set	1
19	102100006201	rear brake caliper	ARIES MD-M300&TR160-1	pc	1
20	103060000U01	tire assy.	GST C184627.5*2.8	set	2
21	13010000U400	tire liner	SCHWALBE 25-584	pc	2
22	10310000Q501	front wheel assy.		set	1
22.1	103010005704	rim	DK 27.5"*13G*36H	pc	1
22.2	103050106901	front wheel drum	FM58-D3218-A7	pc	1
22.3	10303000A263	spoke 1	13#263mm	pc	18
22.4	10303000A264	spoke 2	13#264mm	pc	18
22.5	103040000901	spoke nut 1	13#	pc	36
23	10310000Q601	rear wheel assy.		set	1
23.1	103010008801	rim	DK 27.5"*12G*36H	pc	1
23.2	10302000F201	electric motor assy.	G060 .500.D 48V500W	set	1
23.3	10303000G227	spoke 3	12#227mm	pc	18
23.4	10303000G229	spoke 4	12#229mm	pc	18
23.5	103040001101	spoke nut 2	12#	pc	36
24	105020005701	seat tube	SP-252 φ 30.9*300mm	pc	1
25	105030001701	seat tube clamp	KC88 φ 34.9mm	pc	1
26	105010008101	seat cushion	selle royal 2073UrN PVC	pc	1
27	10608000N501	battery	48V10.5AH	set	1
28	106020001005	sensor	CGQS6	pc	1
29	10609000Z000	charger	FY1505462000 54.6V2A	pc	1
30	129130002101	wheel reflector	722SA	pc	2
31	129130002301	clip 1	14G	pc	1
32	129130100601	clip 2	12G	pc	1
33	10605000F101	controller	EBK199 (114E) 48V	pc	1
34	13010000DF01	controller bracket	SP0298	pc	1
35	10601000AL01	display	510S	pc	1
36	10601000AM01	hand switch	108X 250mm	pc	1
37	10604000E800	main wire harness	800mm	pc	1
38	10101040P000	battery cover	AHF-GZ-003	pc	1
39	104030006001	main shaft	BB96-100 159.5mm	pc	1
40	10601000AB02	on-off switch	500H.06.02	pc	1
41	10601010Y001	switch cover	SP0290	pc	1
42	10604000E500	switch extention cord	650mm	pc	1

43	13010000DG01	cable clamp	SP0297	pc	3
44	102030006401	brake cable 1	850*1050mm	pc	1
45	10203000T001	brake cable 2	1550*1800mm	pc	1
46	10608040K301	battery housing base		set	1
47	129110000300	plug		set	2